

Islandsk Fårehunde Klub - Danmark



Annual report for the year 2022

**The 28th International seminar for
the Icelandic Sheepdog
2023 Vaddö, Sweden
27th - 29th October 2023**



Statistics overview and comments, registrations

Board members

Chairman: Charlotte Kemp Møller

Vice Chairman: Lene Hyldgaard

Treasurer: Annette Tofte Brofelde

Secretary: Mette Sand

Committee member: Solveig Schulz Thiesen

1. Substitute: Bettine Nordsejl

Committees

Breeding Committee: Tove Møller Christensen
Vrangbækvej 43
DK-9900 Frederikshavn
+4526358810 avlsudvalg@islandshunden.dk

Oder members of the breeding committee:
Lene Hyldgaard,
Louise Roer,
Marie Elmgreen Nielsen and Loovamae Vilev.

Show Committee: Michael Rasmussen, Ulrikke Staunsholt Olsen,
Lisbeth Nielsen and Bjarne Nielsen.

Mentality Committee: Bettina Løvstrøm Pedersen and Lene Hyldgaard
Herding Committee: Lene Hyldgaard, Else Westermann and
Svend Brandt Jensen.

Sports Committee: Maibritt Dahl, Bettine Nordsejl, Annette Brofelde,
Bettina Løvstrøm Pedersen and Elspa Metzdorff.

Memberssecretary: Tove Møller Christensen

Club Magazine: Svend Brandt Jensen, Charlotte Kemp Møller

Homepage/webmaster: Louise Roer

Club members

	2022 31 st December	2021 31 st December	2020 31 th December	2019 31 th December	2018 31 th December
Members	512	568	506	575	533
New members this year	126	169	127	143	104

Summary

Litters registered: 30
Puppies: 140
Average inbreeding: 0,7573 %
Average litter size: 4,9
Imported dogs: 6

We were in 2022 practically a brand-new board.

The chairman, Treasurer and vice chairman left the board at the end of 2021. The two remaining members had only just begun working in the board of islandic sheepdog.

This presented us with some tremendous challenges, witch meant a lot of hard work, and it required a lot of time and speculations.

In addition to these challenges, we have still managed to accomplish a lot of our missions and goals.

It was possible to host:

6 Club Shows with a total of 266 entries. Fifteen (15) DKK shows of 327 entries. 73 mentality descriptions.

Around the country our regions are doing a great job in organizing walks, and other events for club members. It is something that strengthens and unite us. When we get together like that, we have a lot of fun and some good talks about our lovely breed.

In 2022 The Danish Kennel Klub had the pleasure of hosting European dog show. A Great show and in conjunction with that, we took the opportunity to host a little club show of our own and it was a great success and we welcomed dogs from different countries.

From a breeding perspective, the number of litters set a record in 2021: 248 puppies. We haven't had such a record since 2018, where 208 puppies were born.

In 2022, we are back to a more normal level on 30 litters and 149 puppies. Still, we are very happy about the result.

Our breeding committee, with Louise Roer and Lene Hyldgaard as prime movers, arranged 2 seminars on genetic diversity in dog breeding, with Professor Peer Berg from Norway. It was a great success.

In 2022, the breeding committee tried, joint HD photographs, to get more dogs X-rayed. Again, that was a success. We Increased the number. It is important to get as many as possible dogs X-rayed for HD (+AD/OCD and PL) so that we can use the HD index to improve the breed in the long term.

Statistics overview and comments, registrations

113 dogs had HD examination. It's nice, but unfortunately more dogs are diagnosed with poorer HD results. We need to take this seriously. The breeding committee has been in dialogue with veterinarian Helle Proschowsky from the Danish Kennel Club about HD development over the years for our breed.

As the Icelandic sheepdog is a lite race, dogs with C-hip status are usually not physically marked due to their hips.

To maintain our race diversity, we need to use dogs with C - hips in breeding because the breed is genetically narrow. But it is in our believe that dogs with C-hip status should only be used with A hips dogs. And the Index should be 200 or more in the match of the parent dogs.

Mentally descriptions (MBU) are looking at the mental health in our dogs. MBU is a fine tool to use for breeders when they look for a mate for their dogs, and for the owners to know more about their dog – both in terms of training/sports and as a family member.

73 dogs were described in 2022, 59 of the descriptions were arranged by the Icelandic Sheepdog Club,

31 males and 42 bitches have been described. Only one dog was stopped during the test, everyone else completed the description. We are very happy about that because we are aiming to have as many dogs as possible described.

In 2022 we had no herding test. But in October this year (2023) we will have 35 dogs in for herding descriptions. We have managed to set down a herding committee and they have provided sheep's for the test. Now we hope to implement these herding tests on a regular basis, in the future.

Charlotte Kemp, Chairman

Tove Møller Christensen, Breeding Committee

Estimated number of Icelandic sheepdogs in Denmark

2022
2700

Litters

	2022	2021	2020	2019	2018
Litters	30	53	33	28	46
Puppies registered	149	248	158	132	209

Statistics overview and comments, registrations

Average size of litters	4,9	4,6	4,7	4,7	4,5
From this: insimination	1	5	3	3	3
Casesarion	0	6	2	3	1
Average inbreeding % 5 generations	0,399	0,7573	0,978	1,1	0,702
Average inbreeding % Dogs Global	-	-	21,84	-	-
General Mean Kinship %	-	-	21,712	-	-

Imports

	2022	2021	2020	2019	2018
Sweden	1	3	0	1	1
Germany	0	1	1	2	0
Iceland	4	2	2	4	2
Norway	0	0	1	0	0
Finland	0	0	0	0	0
Austria	1	0	0	0	0
Poland	1	0	0	0	0

Imports 2021:

DK07008/2022	Reykjvalla Týra	22.02.2021	T	IS30261/21	Island
DK02588/2022	Gjósku Ís-Dós	08.05.2021	T	IS31586/21	Island
DK00961/2022	Sunnusteins Mána Stígur Siggí	22.08.2021	H	IS31708/21	Island
DK20507/2022	Laufeyjar Lán Ljósberi frá Dverghamri	16.04.2022	T	IS33685/22	Island
DK07933/2022	Inni Ilman Kopicccy Poland	03.05.2020	H	PKR 30571	Polen
DK11400/2022	Jack Pine's Islenska Heba	19.03.2022	T	SE25693/2022	Sverige
DK15252/2022	Fylia Bjarkisdottir vom Feinasberg	03.02.2022	T	ÖHZZ/ISL 241	Østrig

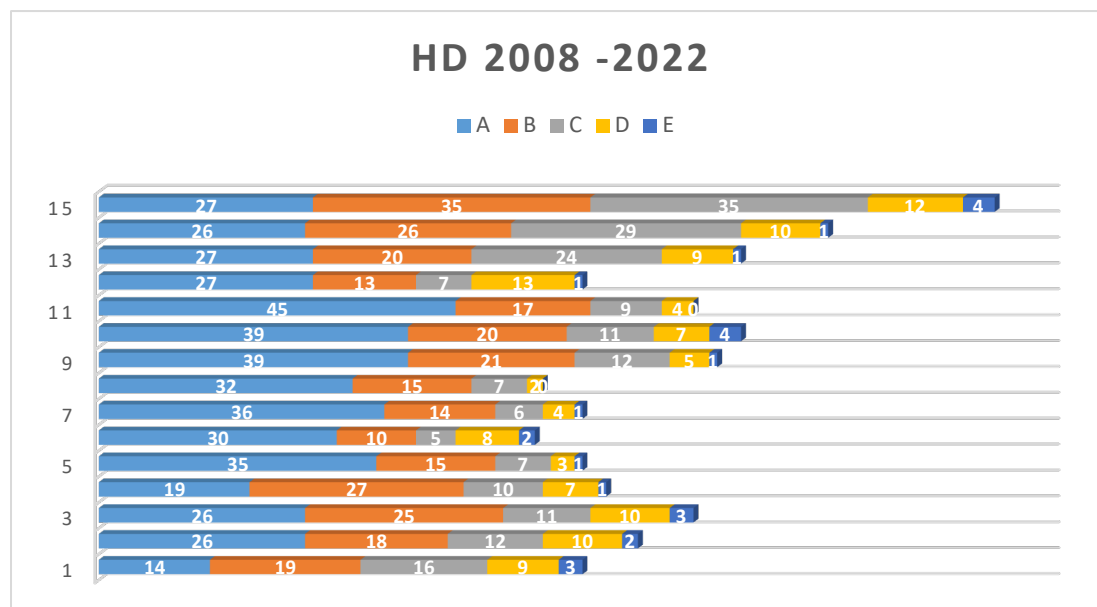
Export 2021: 13 puppies are exported.

Statistics overview and comments, registrations

Hip Dysplasia (HD)

Total number of x-rayed dogs	2022	2021	2020	2019	2018
A	27	26	27	27	45
B	35	26	20	13	17
A+B	62	52	47	40	62
C	35	29	24	7	9
D	12	10	9	13	4
E	4	1	1	1	0
C+D+E	51	40	34	21	13
In total	113	92	81	61	75

Further comments:



Elbow dysplasia (ED)

Total number of x-rayed dogs	2022	2021	2020	2019	2018
Level 0	42	28	14	10	11
Level 1	1	1	1	0	0
Level 2	0	1	0	0	0
Level 3	0	2	0	0	0
In total	43	32	15	10	11

Patella luxation:

Total number of x-rayed dogs	2022	2021	2020	2019	2018
Level 0	17	10	3	6	3
Level 1	3	0	0	0	0
Level 2	0	0	0	0	0
Level 3	0	0	0	0	0
In total	20	10	3	6	3

Eye examinations

Total number of x-rayed dogs	2022	2021	2020	2019	2018
Unaffected signifies (free)	27	36	40	42	44
Hereditary Cataract	1	3	1	0	0
Cornea Distrophe	0	1	0	1	0
Distichiatis	2	1	2	0	1
Others (see below)	4	5*	0	1*	0
In total		45	43	44	44

Other hereditary eye diseases:

* PHTVL/PHPV GRAD 1 - 2022 1

** Retina dysplasi – 2022 1

***PPM – 2022 1

****Iris Hypoplasi – 2022 1

Further comments:

Health, optional testing

Total numbers of dogs examined	2022	2021	2020	2019	2018
BEAR (Hearingdiseases)	0	0	0	0	0
Heart diseases	0	0	0	0	0
Kidney diseases	0	0	0	0	0

Mentality descriptions

	2022	2021	2020	2019	2018
Descripted dogs	73	27	36	50	45
In total	594	535	508	472	422

Working abilities (herding) descriptions

	2022	2021	2020	2019	2018
Descripted dogs	0	0	0	21	6
In total	215	215	215	215	194

Shows

	2022	2021	2020	2019	2018	2017
Number of club shows	6	4	3	5	8	7
Number of dogs at club show *official classes	200	144	104	206	212	218
Number of shows in DKK	16	11	1	14	13	14
Number of dogs at DKK shows *official classes	305	195	25	250	224	233
Total number of shows	505	15	4	19	21	21
Total number of dogs	557	339	129	456	436	451
Total number of unique dogs	101	107	72	129	123	141

Appendix

Hip Dysplasia (HD)

Total number of x-rayed dogs	2008	2009	2010	2010	2012	2013	2014	2015	2016	2017	2018	2019	2020	2021	2022
A	14	26	26	19	35	30	36	32	39	39	45	27	27	26	27
B	19	18	25	27	15	10	14	15	21	20	17	13	20	26	35
A+B	33	44	51	46	47	40	50	47	60	59	62	40	47	52	62
C	16	12	11	10	7	5	6	7	12	11	9	7	24	29	35
D	9	10	10	7	3	8	4	2	5	7	4	13	9	10	12
E	3	2	3	1	1	2	1	0	1	4	0	1	1	1	4
C+D+E	28	24	24	18	11	15	11	9	18	22	13	21	34	40	16
In total	61	68	75	64	58	55	61	56	78	81	75	61	81	92	113

Elbow dysplasia (ED)

Total number of x-rayed dogs	2008	2009	2010	2011	2012	2013	2014	2015	2016	2017	2018	2019	2020	2021	2022
Level 0	7	4	4	6	8	2	5	2	11	13	11	10	14	28	42
Level 1	1						2		0	0	0	0	1	1	1
Level 2									0	0	0	0	0	1	0
Level 3									0	0	0	0	0	2	0
In total	8	4	4	6	8	2	7	2	11	13	11	11	15	32	43

Appendix

Patella luxation:

Total number of x-rayed dogs	2008	2009	2010	2011	2012	2013	2014	2015	2016	2017	2018	2019	2020	2021	2022
Level 0	-	-	-	-	-	-	-	-	1	2	3	6	3	10	17
Level 1	1	-	-	-	-	-	-	-	1	0	0	0	0	0	3
Level 2	-	-	-	-	-	-	-	-	-	0	0	0	0	0	0
Level 3	-	-	-	-	-	-	-	-	-	0	0	0	0	0	0
In total	1	-	-	-	-	-	-	-	2	2	3	6	3	10	20

Eye examinations

Total number of x-rayed dogs	2008	2009	2010	2011	2012	2013	2014	2015	2016	2017	2018	2019	2020	2021	2022
Unaffected signifies (free)	66	73	77	80	57	59	64	52	49	47	41	42	40	36	27
Hereditary Cataract	1	2	2	1	1	0	1	0	0	0	1	0	1	3	1
Cornea Distrophe	0	0	0	0	0	0	1	0	0	0	0	1	0	1	0
Distichiatis	4	2	3	3	1	3	1	0	2	0	1	0	2	1	2
Others	0	1	1	0	0	1	1	0	1	1	0	1	2	5	4
	71	78	83	84	58	63	68	52	52	48	44	44	43	45	

Appendix

In total																	34
----------	--	--	--	--	--	--	--	--	--	--	--	--	--	--	--	--	----

Mentality descriptions

Total number of described dogs	2008	2009	2010	2011	2012	2013	2014	2015	2016	2017	2018	2019	2020	2021	2022
									41	35	45	50	36	27	73
In total									342	377	422	472	508	535	594

Working abilities (herding) descriptions

Total number of described dogs	2008	2009	2010	2011	2012	2013	2014	2015	2016	2017	2018	2019	2020	2021	2022
									13	30	6	21	0	0	0
In total									137	188	194	215	215	215	215

Appendix
